



Agency Overview: Santa Cruz County Flood Control and Water Conservation District, Zone 7

Antonella Gentile, CFM, Resource Planner

BAFPAA Monthly Members Meeting

January 11, 2021 1:30 PM

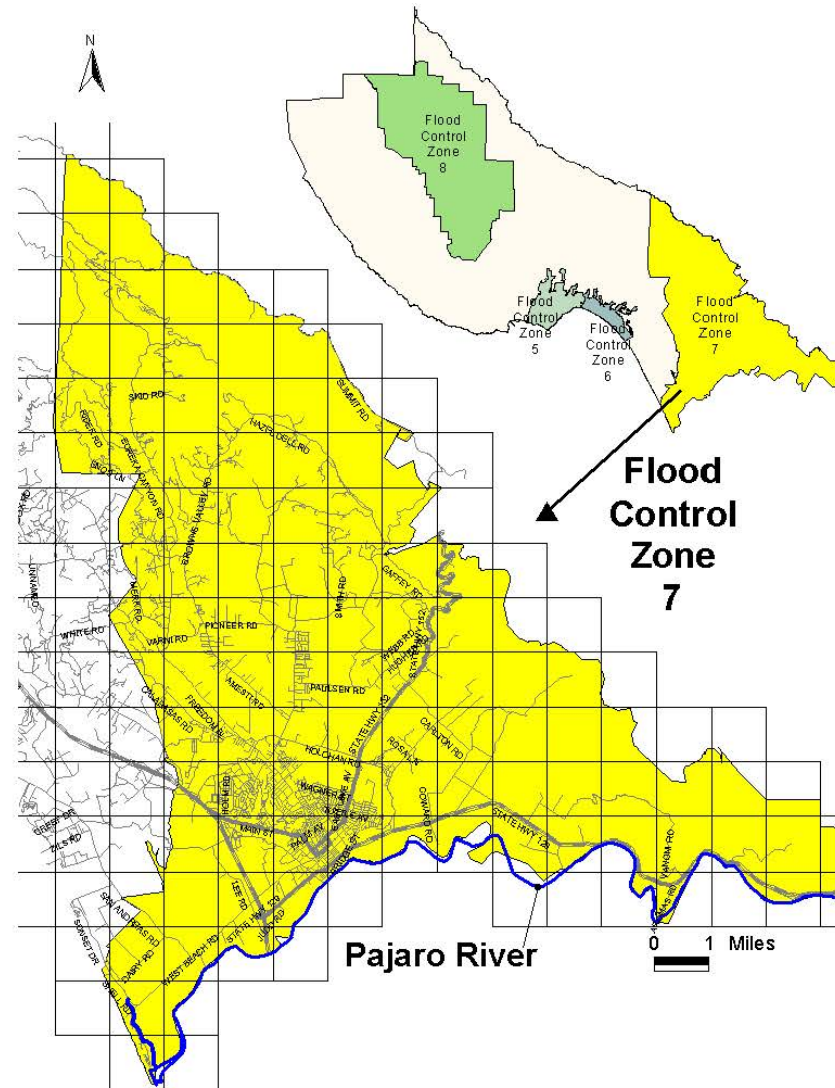
District Staff

- ▶ Mark Strudley, Ph.D, Division Manager
- ▶ Rusty Barker, M.S, P.E, Civil Engineer
- ▶ Antonella Gentile, CFM, Resource Planner



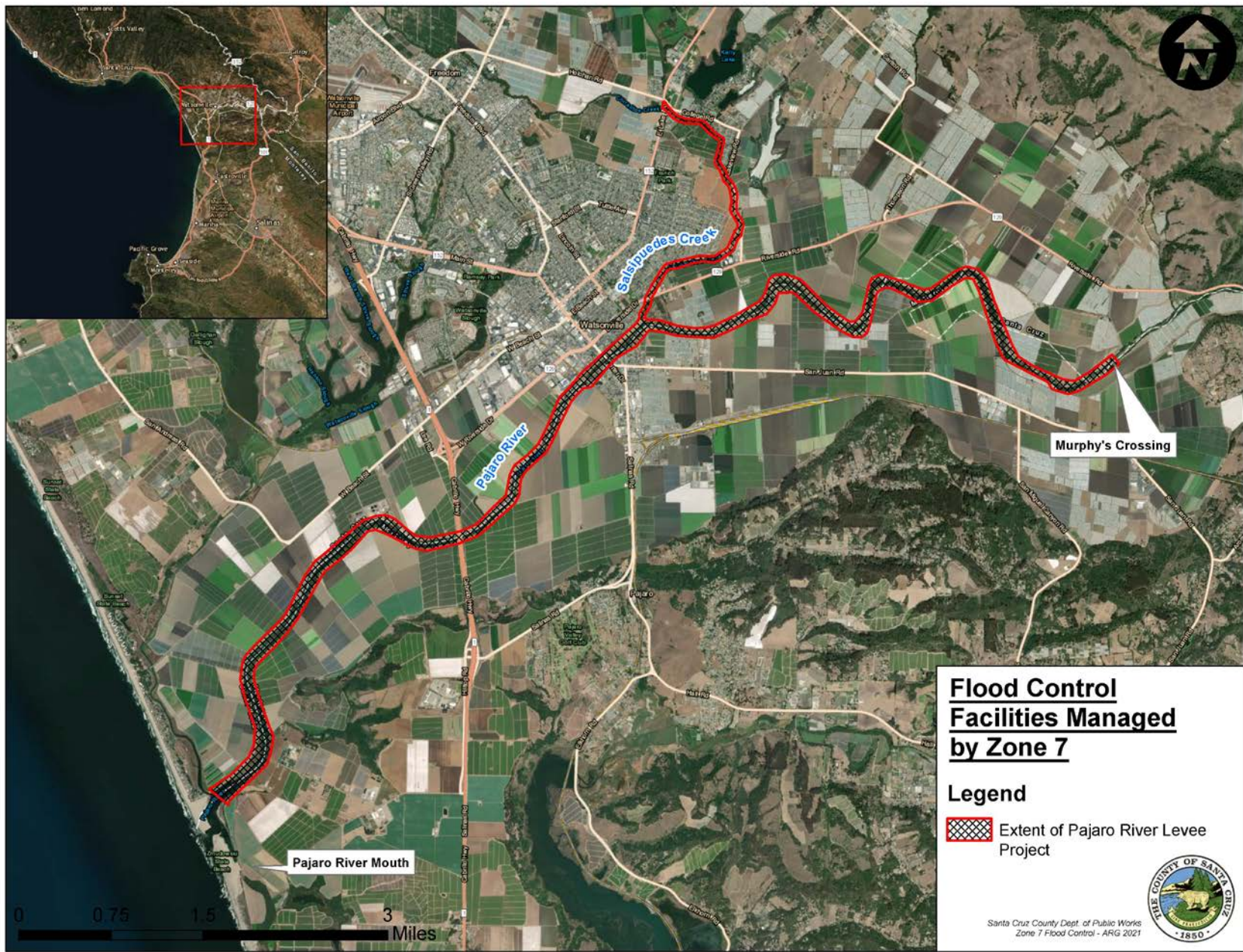
District Boundary

**The watershed
of the Pajaro River
within
Santa Cruz County
= approx. 90 Sq. miles**



Brief History of Zone 7

- ▶ 1891 - Pajaro Drainage District formed
- ▶ 1939 - Storm Drain Maintenance District Act passed by State of California
- ▶ 1949 - USACE constructs levees along Pajaro River and Salsipuedes Creek
- ▶ 1952 - Board of Supervisors establishes the Pajaro Storm Drainage Maintenance District
- ▶ 1955, 1982, 1986 - City of Watsonville flooded
- ▶ Ongoing conversations with USACE to construct a new project to address insufficient flood protection of existing facility
- ▶ 1991 - Santa Cruz County Flood Control and Water Conservation District, Zone No. 7 established



Ongoing Flooding Problem

Existing Levee Project protects from:

- ~10% ACE event for Pajaro River

- ~5% ACE event for Salsipuedes Creek

1955 - City of Watsonville flooded

1958 - Agricultural lands flooded

1982 - City of Watsonville flooded

1986 - City of Watsonville flooded

1995 - Town of Pajaro flooded (2 deaths)

1998 - Agricultural lands flooded

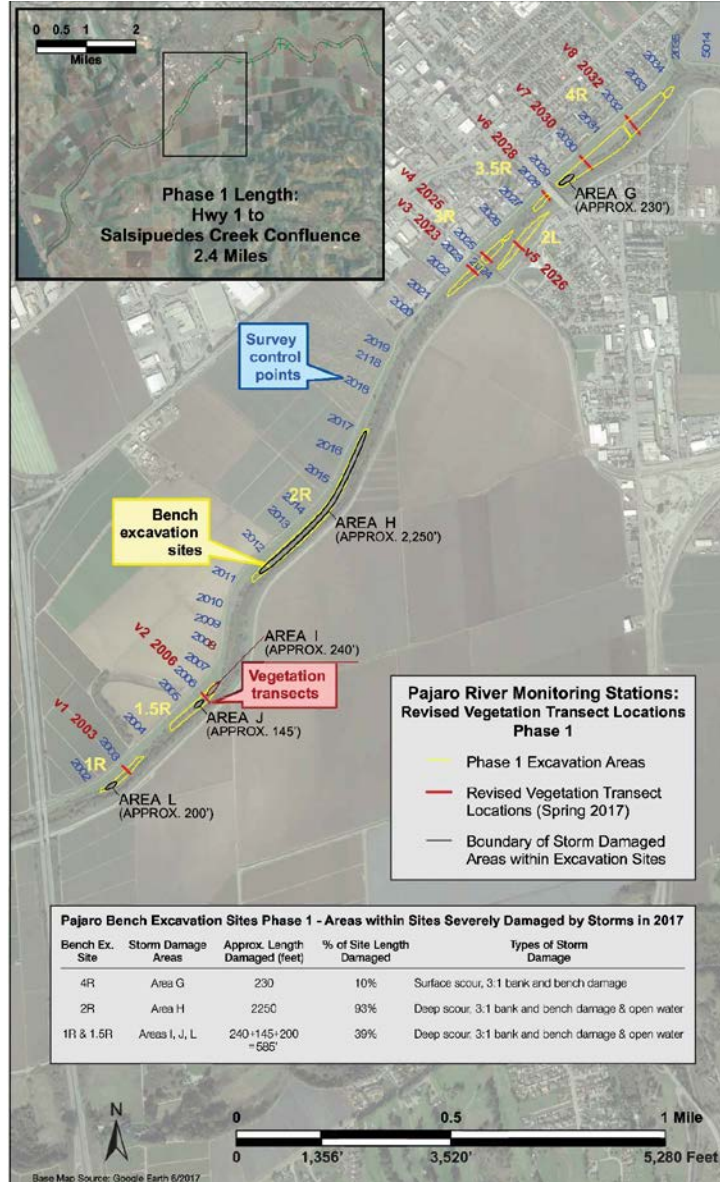
2017 - Both Salsipuedes and Pajaro levees experienced damage from high flows



Responsibilities

- ▶ Maintain the flood carrying capacity of the facility
- ▶ Work with USACE to repair facility and build new project
- ▶ Direct contractor and drainage crew projects:
 - ▶ Levee maintenance
 - ▶ Vegetation management
 - ▶ Culvert replacement
 - ▶ Bank repairs
 - ▶ Homeless camp cleanup
- ▶ Engineering design
- ▶ Permitting

Bench Excavation Project



Pajaro River Mouth Breaching Program



Culvert Repairs



2021 Goals

- ▶ Pajaro River Flood Risk Management Project
 - ▶ JPA Adoption
 - ▶ USACE Design Agreement
 - ▶ Draft and Final EIRs
- ▶ Stream Maintenance Program Development
- ▶ Breaching Program permit renewals
- ▶ Breaching Program alternatives feasibility analysis
- ▶ Ongoing operations and maintenance, including more culvert replacements

Questions?

- ▶ Email Antonella.Gentile@santacruzcounty.us for follow-up questions.

Thank you for your time!